

FLORIDAPOLY

OPENING DOORS TO THE FUTURE





As Florida Polytechnic transitions from a startup to a mature university, we are working to build a stronger Florida and lead the charge to develop future high-tech business leaders, create jobs and grow Florida's economy. Our STEM-focused curriculum excels in the education, discovery and application of technology to today's complex problems, with the goal of making Florida a top destination for high-tech companies.

Dr. Randy K. Avent **PRESIDENT**

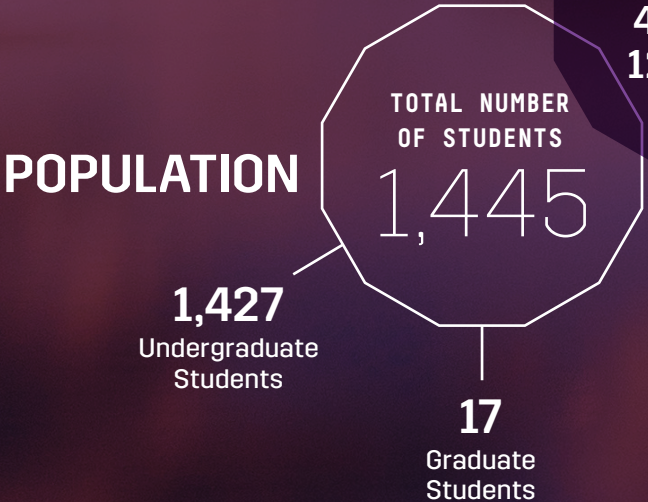
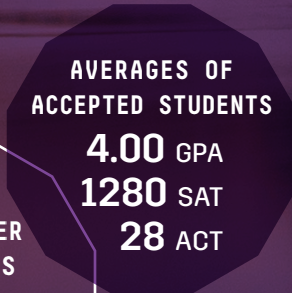
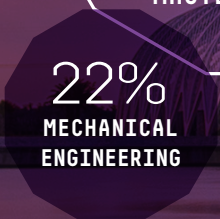
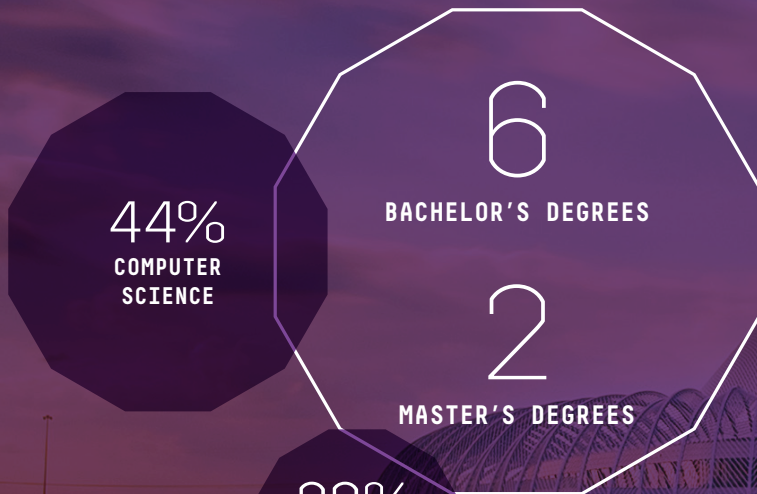


INVESTMENT PRIORITIES

- 1 ATTRACT, DEVELOP & RETAIN TOP STEM TALENT: SCHOLARSHIP
- 2 SECURE FUNDING FOR THE APPLIED RESEARCH CENTER (ARC)
- 3 DEVELOP THE ADVANCED MOBILITY INSTITUTE (AMI)
- 4 ENHANCE ACADEMIC, CAREER SERVICES & FACILITIES
- 5 ADVANCE THE CENTER FOR ENTREPRENEURSHIP
- 6 ESTABLISH A LEADERSHIP INSTITUTE
- 7 IMPLEMENT THE CENTER FOR TECHNOLOGY IN EDUCATION (CTE)



FLORIDA POLY BY THE NUMBERS



BACHELOR'S DEGREES

- Data Analytics
- Computer Engineering
- Computer Science
- Electrical Engineering
- Science & Technology Management
- Mechanical Engineering

MASTER'S DEGREES

- Master of Science in Engineering
- Master of Science in Computer Science

INTERNATIONAL



PRIORITY 1

ATTRACT, DEVELOP & RETAIN TOP STEM TALENT: SCHOLARSHIP

GOAL

Attract, develop and retain top STEM (Science, Technology, Engineering and Math) talent in order to support Florida's growing need for a highly-skilled, highly-trained workforce in the fields of advanced technology and engineering. This is imperative for the state to remain competitive in a technology disrupted world.

OPPORTUNITY

- Highly selective STEM-only university that attracts the best students
- Innovative programs that prepare students for successful careers in emerging technologies that will drive Florida's economy over the next 25-50 years
- A curriculum that balances strong fundamentals for lifetime employability with projects for workforce preparation
- Co-curricular activities around soft skills, entrepreneurship and leadership
- Strong industry partnerships with small and medium businesses to retain our graduates in Florida

INVESTMENT NEEDS

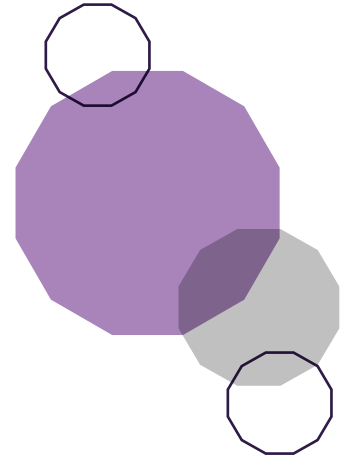
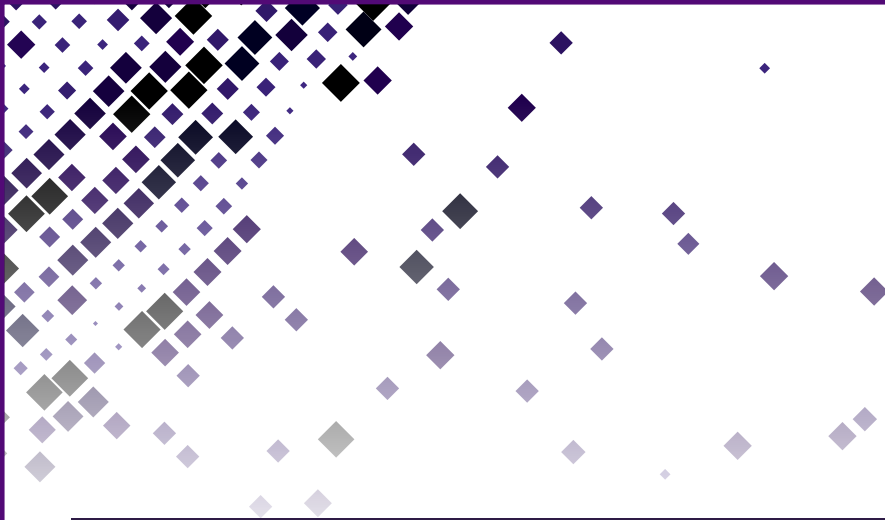
GENERAL SCHOLARSHIP INVESTMENT

- **2012 Fund (Florida Poly annual campaign)**
Through an annual or recurring gift you can join other alumni, parents, faculty, staff and friends who support students and scholarships each year.
- **Presidential Scholarship**
\$25,000 provides all expenses for students who win the President's Club Scholarship Competition. Applicants present a solution to a current problem in society and winners are graded upon innovation, rational/impact, value and presentation in a question/answer session.



- **The Johnson Scholarship**
Awarded to students with documented disabilities and demonstrated financial need. Matching funds from the Johnson Scholarship Foundation match your gift.
- **First Generation Scholarship**
Awarded to students who are the first in their family to pursue a college degree. Your gift is matched by the Helios Education Foundation and the Board of Governors.

INVESTMENT NEEDS (continued on back) ...



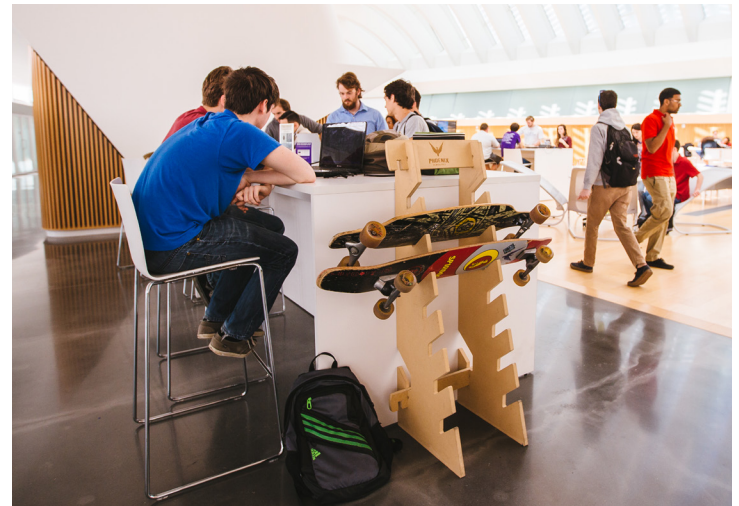
INVESTMENT NEEDS (continued)

NAMED SCHOLARSHIP FUNDS: START AT \$10,000

- Named scholarship funds can be created in honor of someone on behalf of an organization or company.
- Minimum gift levels begin at \$10,000 and gifts of any size may be added.
- Established funds include:
 - **JD Alexander Scholarship Fund**
Established to honor Senator JD Alexander for his role in establishing Florida Poly. Scholarships are awarded to incoming freshmen who meet the eligibility requirements.
 - **The Lake Wales Scholarship Fund**
Awarded to incoming freshmen graduating from Lake Wales High School.
 - **Joshua D Crowder Memorial Scholarship Fund**
Established to honor Joshua Crowder, an incoming freshmen for the class of 2020. This scholarship is awarded to incoming freshmen from a Leon County, Florida public school.

ENDOWED SCHOLARSHIP FUNDS: START AT \$25,000

- Endowed funds provide a consistent flow of support to students and allow the University to plan into the future.
- Minimum gift levels begin at \$25,000 and gifts of any size may be added.
- Funds can be established in honor of your family, business or to pay tribute to someone.
- Established endowments include:
 - Florida Polytechnic University General Endowment
 - Saddle Creek Logistics Endowment
 - JD Alexander Endowment
 - Ava Parker Endowment



PRIORITY 2

SECURE FUNDING FOR THE APPLIED RESEARCH CENTER (ARC)

GOAL

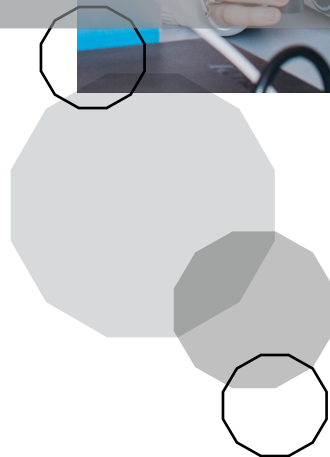
Grow Florida Poly's impact on the economy by providing a venue for translational faculty research and student projects. The Applied Research Center (ARC) will provide much-needed research space that is currently not available on campus. The space is critical in supporting our project-based curriculum and creating an environment for students and faculty to live out our technology-based mission.

OPPORTUNITY

- State investment in the ARC leaves \$26.7 million needed for completion
- The ARC will help create new Florida-based companies by providing space for:
 - Projects for students and industry partners
 - An entrepreneurship center with “welding” (makerspace) and “white” (incubator) spaces
 - Means for faculty to “bridge the technology valley of death” and take emerging and fast-growing technologies to market

INVESTMENT NEEDS

- Building naming
- Research labs
- Equipment



PRIORITY 3

DEVELOP THE ADVANCED MOBILITY INSTITUTE (AMI)

GOAL

Build a nationally recognized institute, the Advanced Mobility Institute (AMI), and supporting research park that create a high-technology economy around connected and autonomous vehicles.

OPPORTUNITY

- The Florida Turnpike Enterprise will fund and build SunTrax, the most advanced test site in the nation adjacent to Florida Polytechnic's campus.
- SunTrax and Florida Poly have been named one of 10 National Test Centers for connected and autonomous vehicles.
- SunTrax provides a 400-acre theater for subjecting driverless cars to different scenarios and validating their responses.
- Use technology to improve student outcomes and reduce costs.
- Increase the talent pipeline.

INVESTMENT NEEDS

- Endowed chair for a nationally-known executive director of AMI
- Name a simulation and emulation laboratory that will be used for initial testing
- Faculty support for technology ventures in Florida-relevant industries like agriculture, planned communities, logistics and maritime
- Business development position to attract relevant industries to SunTrax
- Name the institute for an individual or company





PRIORITY 4

ENHANCE ACADEMIC, CAREER SERVICES & FACILITIES

GOAL

Provide a world-class educational environment with top-tier faculty, a rigorous curriculum, advanced research equipment and a focus on the all-around success of our students.

FACILITIES NAMING OPPORTUNITIES

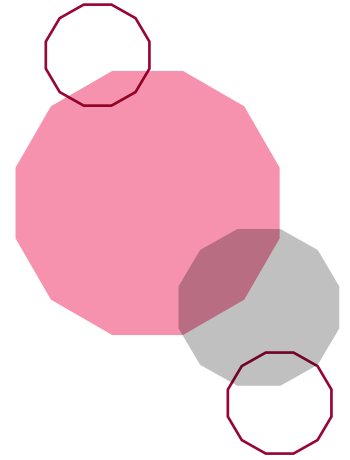
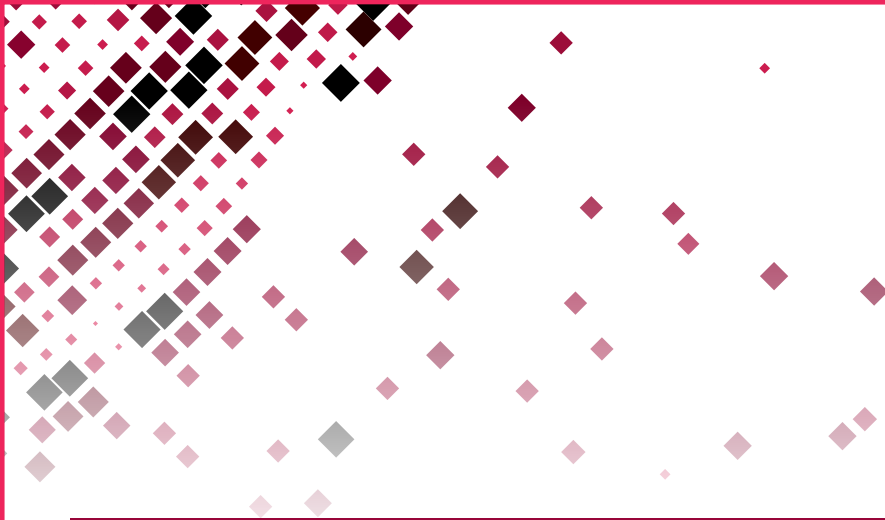
- Innovation, Science and Technology Building:
 - Atrium
 - Collaboration rooms
 - Aula Magna
 - Computer Lab
 - Labs
 - President's suite
 - Offices
 - Provost's suite
- Athletic complex
- Student Achievement Center
- Residence halls

ADDITIONAL ACADEMIC SUPPORT OPPORTUNITIES

- **Academic Success Center (ASC)**
Gift provides five years of additional support for the center. This center provides advising support for students over issues ranging from their academic program to how to be a successful student to how to choose a career track. Support will provide an additional staff member for this effort.



ADDITIONAL ACADEMIC SUPPORT OPPORTUNITIES (continued on back) ...



ADDITIONAL ACADEMIC SUPPORT OPPORTUNITIES (continued)

- **Student Success Center**
This naming opportunity allows an addition to the admissions building so that we can provide students with one place to go for admissions, the bursar, the registrar's office, and the academic success center. This will become a central hub for student services which is vital to campus success.
- **Center for Teaching and Learning**
This will provide support for software, hardware and staff to support the development of new courses and improvements to courses that are delivered. The gift would be expensed over approximately five years. A particular emphasis area is to use additional staff to improve projects in the curriculum.
- **Endowed (Named) Department Chairs**
Name the department chair with the endowment used to pay salary increments for the chair and to support research efforts for the chair and the department.
- **Capstone Project**
Provide funding for project supplies for the senior capstone series. This senior level course has students working on industry based projects, and the funding will be used for infrastructure that supports project development and the supplies for project completion.
- **Endowment to fund the "Writing Across the Curriculum" Center**
Writing is fundamental to professional success and STEM students need just as much help with writing as their liberal arts counterparts. This gift would allow us to open a writing across the curriculum office which supports writing in courses such as laboratories and design project courses.



PRIORITY 5

ADVANCE THE CENTER FOR ENTREPRENEURSHIP

GOAL

Continue to build a program that facilitates entrepreneurship through investments in startups and early stage companies. Florida Poly will create an entrepreneurial culture, education and student venture support.

OPPORTUNITY

- Work with accomplished entrepreneurs and faculty to create culture, academics, programming and a support network for all students.
- Graduate students who have the skills to hit the ground running as contributing members of an existing startup/company and who understand the challenges and paths to starting a business themselves.

INVESTMENT NEEDS

- Name the Center for Entrepreneurship
- Hire and endow a named executive director of the center
- Hire and endow a named entrepreneurial professorship
- Create and endow a named Executive-in-Residence (EIR) Program
- Establish a named mentoring program
- Establish a named speaker series
- Named competitions (i.e. Business Plan, Ideation, Hackathon)
- Scholarships for equity
 - In exchange for entrepreneurial scholarship, Florida Poly receives two percent non-diluting equity stake in any startup established while a student or within two years after graduation.
- Establish a named startup fund
 - Milestone based, mentor required, purchase order funds
 - Disbursement managed by small, select, experienced team



PRIORITY 6

ESTABLISH A LEADERSHIP INSTITUTE

GOAL

Establish a leadership institute to advance principle-based best practices for technology innovators and companies in a world challenged by the proliferation of technology that is changing our social and working environments. Provide leadership and critical soft-skill development for all students to ensure they graduate ready to lead high-performance professional teams.

OPPORTUNITY

- Work with U.S. Air Force Academy to duplicate their leadership program for all students at Florida Poly.
- Build a program centered on leadership and character development.
- Graduate students who live honorably, treat others fairly, lift others to be their best possible selves and practice Florida Poly's core values.
- Graduate students who are lifetime employable.

INVESTMENT NEEDS

- Name the Leadership Institute
- Hire and endow a named chair of the Leadership Institute
- Create a Corporate Fellows Endowed Scholarship
- Establish and name a mentoring program
- Establish and endow an Executive Engagement Program
 - On-campus visits from executives and class trips to companies
 - These discussions are among the most constructive aspects of the program and provide insight on the application of principle based leadership to the problems facing high-level executives.



PRIORITY 7

IMPLEMENT THE CENTER FOR TECHNOLOGY IN EDUCATION (CTE)

GOAL

Move STEM education from the industrial age to the information age. Advance the content and delivery of technology education via the Center for Technology in Education (CTE) in order to incorporate the application of information (Internet of things, artificial intelligence and data analytics) into the full continuum of technology research, manufacturing and delivery.

OPPORTUNITY

- Education in the information age:
 - Virtual classrooms with instructors that leverage powerful tools
 - Collaborative and optimizing instruction IP (Netflix model for education)
 - Self-paced, competency based with success coaches
- Capacity to improve outcomes and reduce costs:
 - Open-source structure for instruction IP through consortiums
 - Professional engineer (motivation, learning styles, ethics)
 - Provides for early career discovery

INVESTMENT NEEDS

- Secure funding to build a collaborative open-source structure that demonstrates this revolutionary concept
- Seed funding for open-source demonstration
- Develop a career development tool



FLORIDA POLYTECHNIC UNIVERSITY FOUNDATION, INC.

We partner with Florida Polytechnic University to engage the community,
inspire investment, and steward resources to build a world class university.

863-874-8514

foundation.floridapoly.edu



FLORIDA POLYTECHNIC
UNIVERSITY