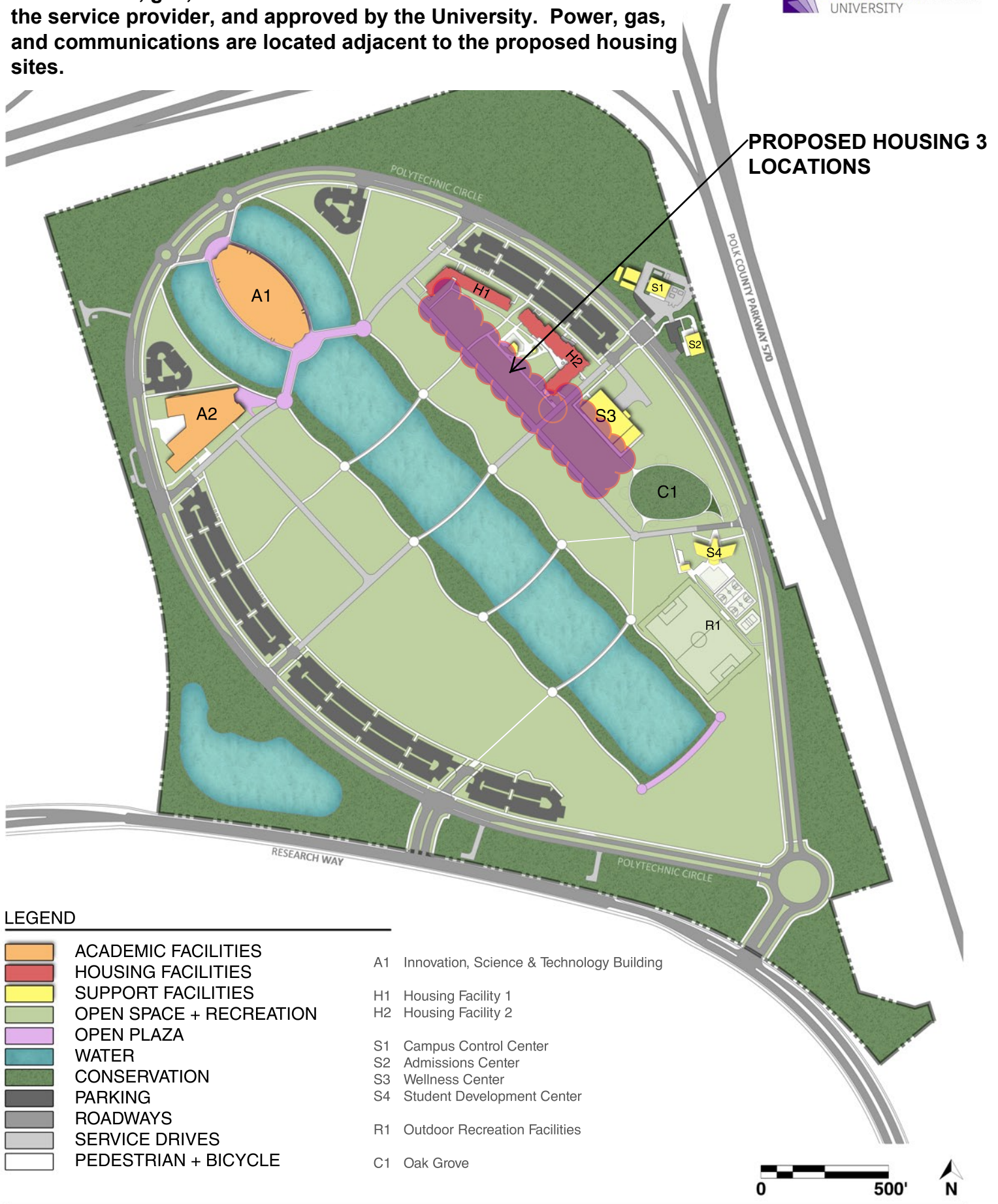





PROPOSED HOUSING 3 LOCATIONS

Note: Power, gas, and communications must be coordinated with the service provider, and approved by the University. Power, gas, and communications are located adjacent to the proposed housing sites.

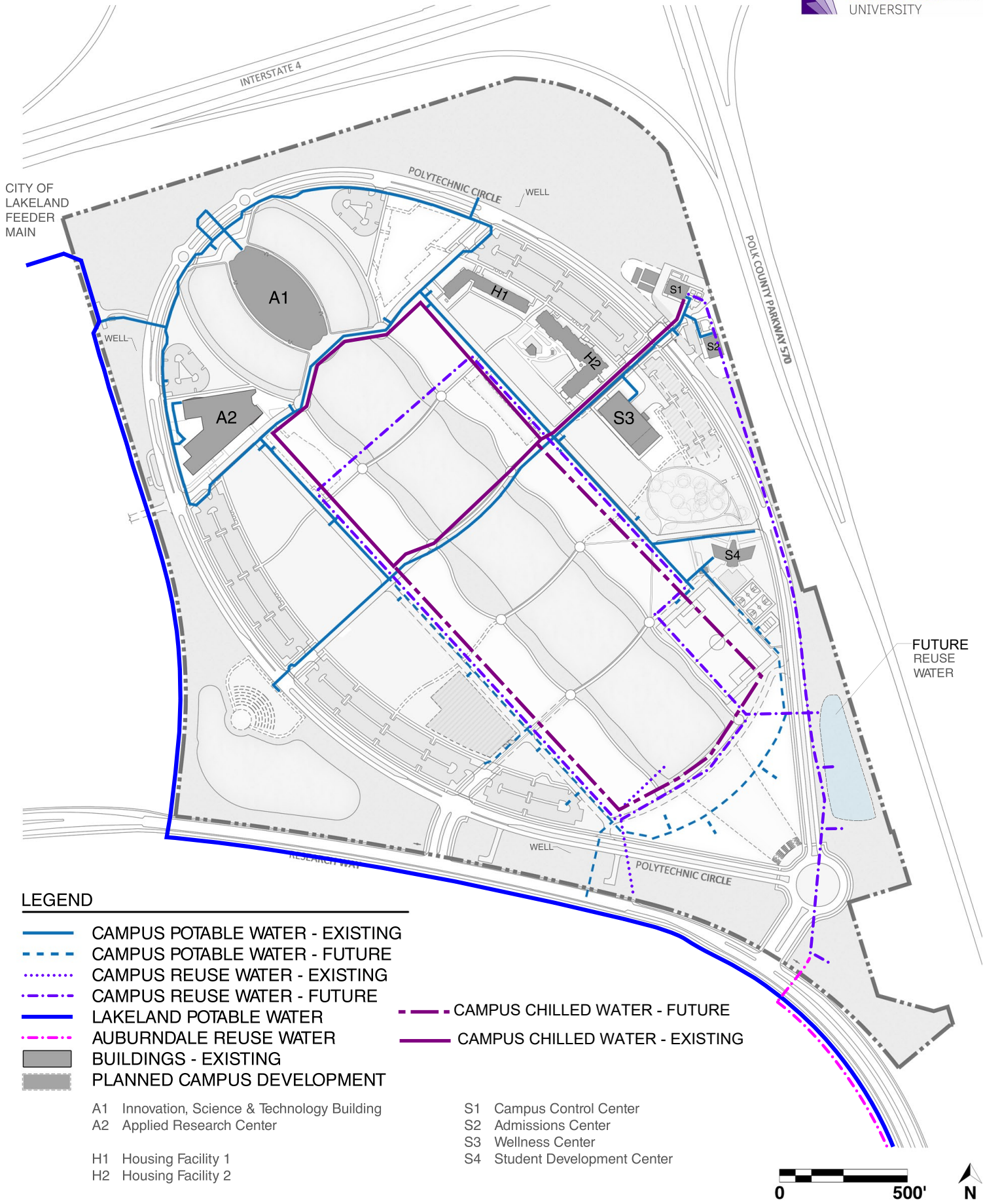


LEGEND

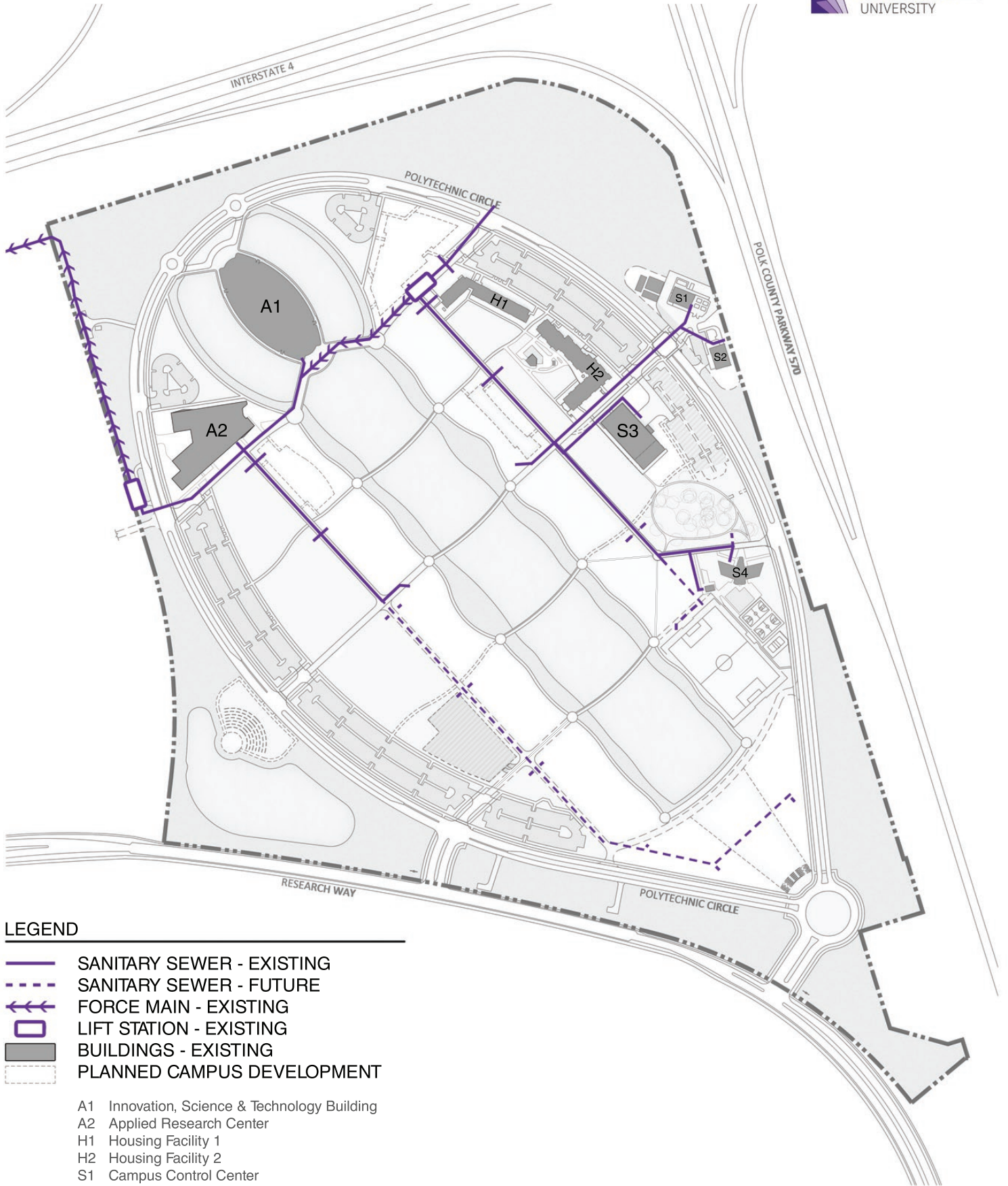
	ACADEMIC FACILITIES	A1	Innovation, Science & Technology Building
	HOUSING FACILITIES	H1	Housing Facility 1
	SUPPORT FACILITIES	H2	Housing Facility 2
	OPEN SPACE + RECREATION	S1	Campus Control Center
	OPEN PLAZA	S2	Admissions Center
	WATER	S3	Wellness Center
	CONSERVATION	S4	Student Development Center
	PARKING	R1	Outdoor Recreation Facilities
	ROADWAYS	C1	Oak Grove
	SERVICE DRIVES		
	PEDESTRIAN + BICYCLE		









POTABLE WATER, REUSE WATER, AND CHILLED WATER DISTRIBUTION MAP



SANITARY SEWER COLLECTION MAP



LEGEND

-  SANITARY SEWER - EXISTING
-  SANITARY SEWER - FUTURE
-  FORCE MAIN - EXISTING
-  LIFT STATION - EXISTING
-  BUILDINGS - EXISTING
-  PLANNED CAMPUS DEVELOPMENT

- A1 Innovation, Science & Technology Building
- A2 Applied Research Center
- H1 Housing Facility 1
- H2 Housing Facility 2
- S1 Campus Control Center
- S2 Admissions Center
- S3 Wellness Center - Phase 1
- S4 Student Development Center

